



---

2 Bed Flat/Apartment

1 Lodge Close  
Duffield  
Belper  
DE56 4HE

£925 Per Calendar Month

---

Fletcher  
& Company



# 1 Lodge Close Belper DE56 4HE



- Available Mid-Late February 2026 • Available Fully, Part Or Un-Furnished – Landlord Is Flexible • High Specification Kitchen • High Specification Shower/ Bathroom • Two Double Bedrooms • Ecclesbourne School Catchment Area – Duffield Village • Parking Available • Close To Shops & Transport Links • Available Long Term • A Stunning Two Bedroom First Floor Apartment

Available Fully Furnished, Part-Furnished or Unfurnished

An exceptionally presented two-bedroom first-floor apartment, offering refined interiors, high-quality finishes and excellent insulation, all set within beautifully maintained communal gardens.

Positioned in a highly desirable Duffield location, to superb junior schools and the noted Ecclesbourne Secondary School.

## Private Access

The apartment is approached via its own private staircase, enhanced by discreet security lighting and remote-access CCTV, offering both privacy and peace of mind.

## Entrance Hall

A smart PVC entrance door with a secure locking system and inset doormat leads into a welcoming hallway with access to the kitchen and living space.

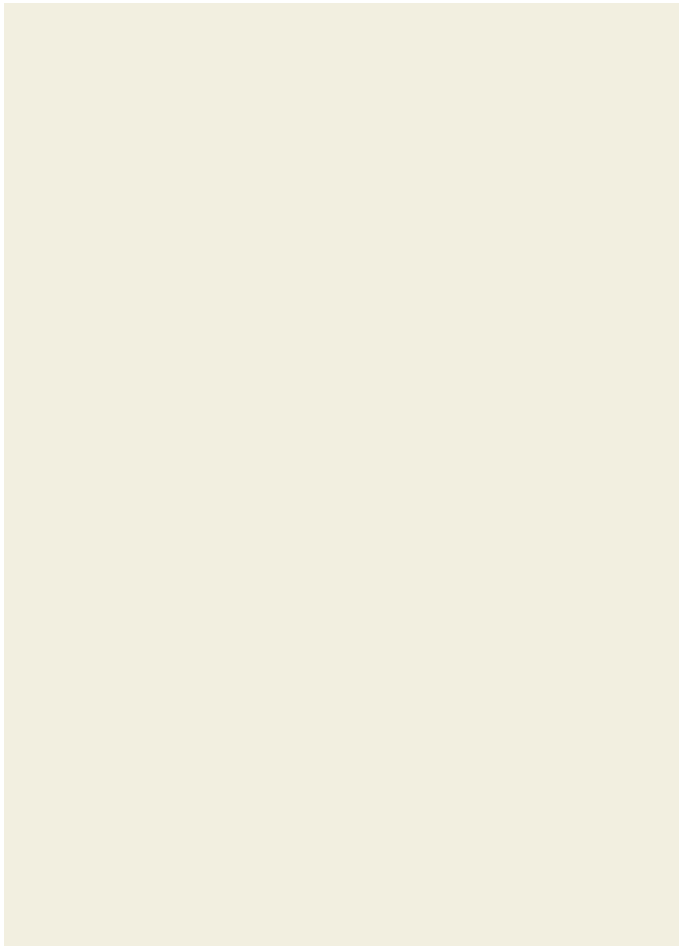
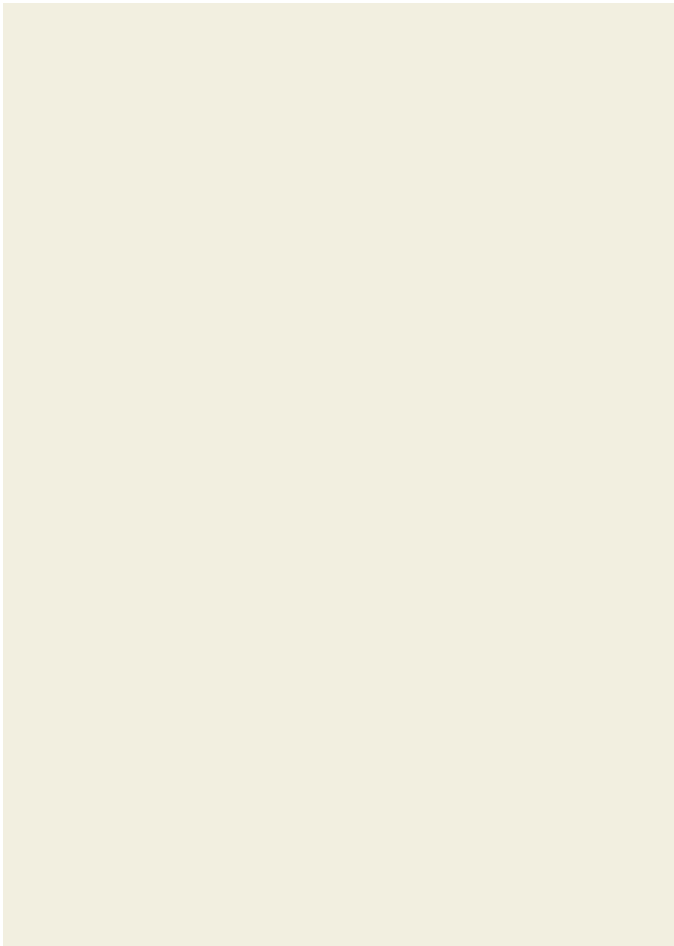
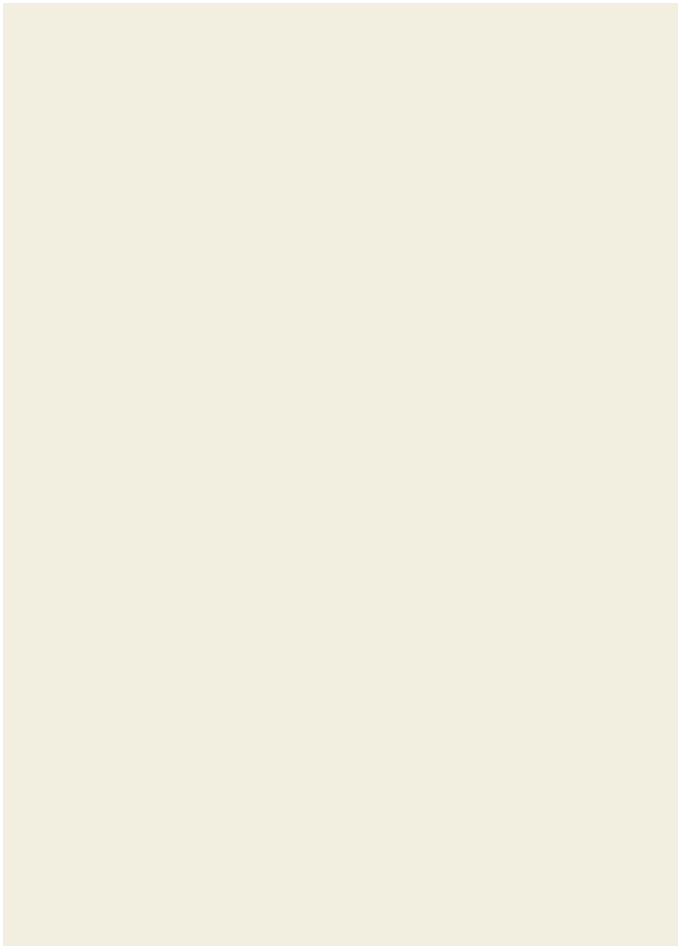
## Kitchen

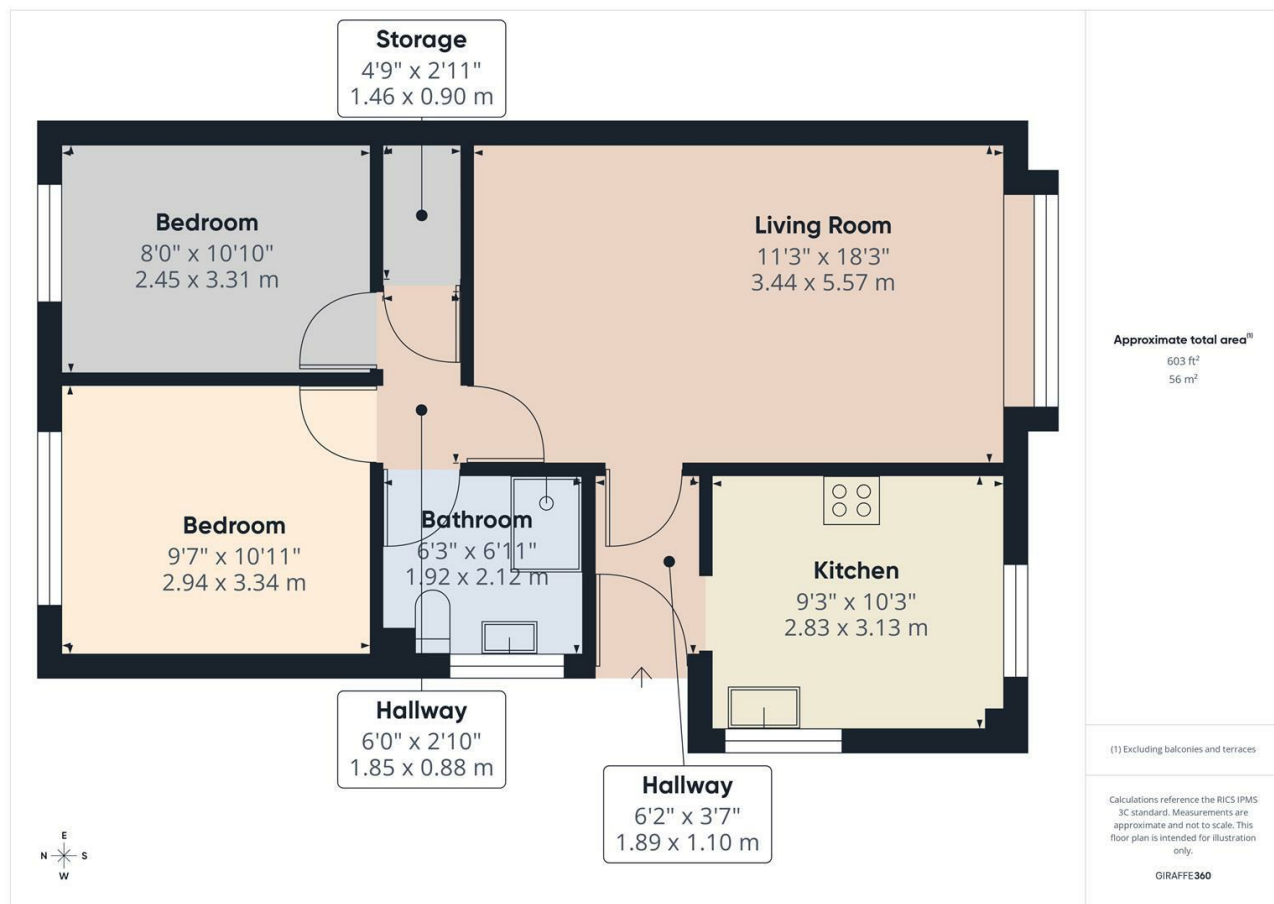
A superbly appointed, professionally installed Blum kitchen with dual-aspect double-glazed windows providing abundant natural light. Features include a plinth heater, composite sink, sleek downlighting, and premium appliances: Montpellier integrated oven, ceramic hob and extractor hood. Fridge/ freezer, washing machine and dishwasher.

## Lounge / Diner

An elegant and generously proportioned living and dining space, centred around a large southerly-facing bay window that floods the room with natural light.



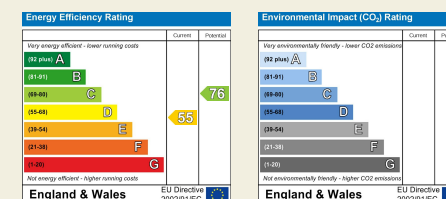




Duffield House  
Town Street  
Duffield  
Derbyshire  
DE56 4GD

T: 01332 843390

E: duffield@fletcherandcompany.co.uk  
www.fletcherandcompany.co.uk



These particulars do not constitute an offer or a contract neither do they form part of an offer or contract. The vendor does not make or give and Messrs. Fletcher & Company nor any person employed has any authority to make or give any representation or warranty, written or oral, in relation to this property. Whilst we endeavour to make our sales details accurate and reliable, if there is any point which is of particular importance to you, please contact the office and we will be pleased to check the information for you, particularly if contemplating travelling some distance to view the property. None of the services or appliances to the property have been tested and any prospective purchasers should satisfy themselves as to their adequacy prior to committing themselves to purchase.

**Fletcher  
& Company**